

Connect your EBO system with any OPC server!

Do you need to connect your Schneider Electric's EcoStruxure Building Operation (EBO) with 3rd party OPC servers?

Now it is possible with Control-See **EBO-OPC client** extension.

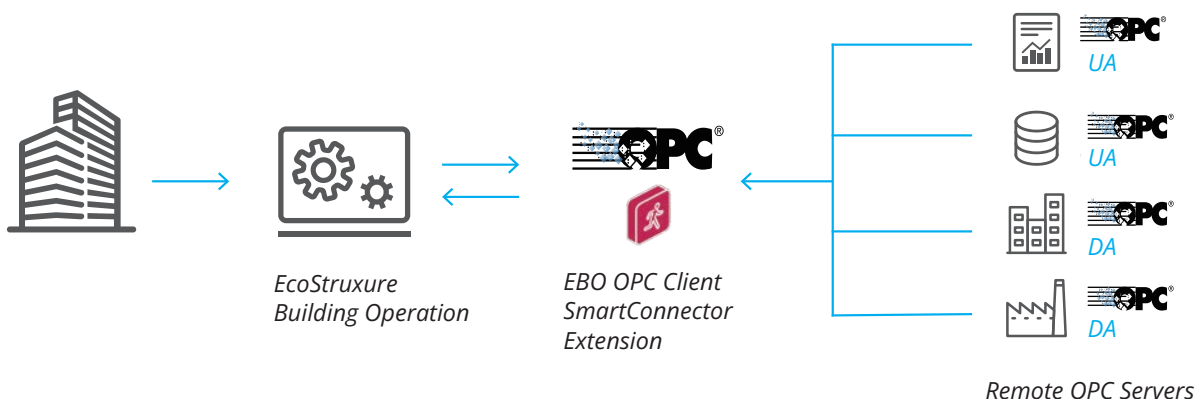
Easy implementation

The **EBO-OPC client** is an EWS Server, so implementation is easy and straightforward.

The **EBO-OPC client** exposes remote OPC servers' items. All you need is to host the EWS server in your EBO system.

Performance is important!

The **EBO-OPC Client** works in event-driven mode. This means that only value changes are pushed from the remote OPC servers to your EBO system. No polling is required, ensuring optimal system performance!





What is OPC?

In today's complex economy, information is the key to business success and profitability. OPC technologies were created to allow information to be easily and securely exchanged between diverse platforms from multiple vendors and to allow seamless integration of those platforms without costly, time-consuming software development. This frees engineering resources to do the more important work of running your business.

Features

- High performance using subscription mode
- Support for OPC UA and DA
- Running as Windows service for improved availability
- Automatic reconnection with the remote OPC servers
- Discovery of all OPC servers' items
- Scalability - The number of the OPC items you can host is virtually unlimited. The only limit is the amount of memory (RAM) in your computer
- Viewing and modifying OPC values withing the EBO

OPC Specifications

- OPC DA (OPC Data Access) 1.0
- OPC DA (OPC Data Access) 2.0
- OPC DA (OPC Data Access) 3.0
- OPC UA (OPC Unified Architecture)

The **EBO-OPC Client** supports the following features and operations:

- Subscription mode (only value changes are sent from the OPC servers to the client)
- OPC Server browsing
- OPC Single read and Single write
- Runs as a Windows Service

Specifications

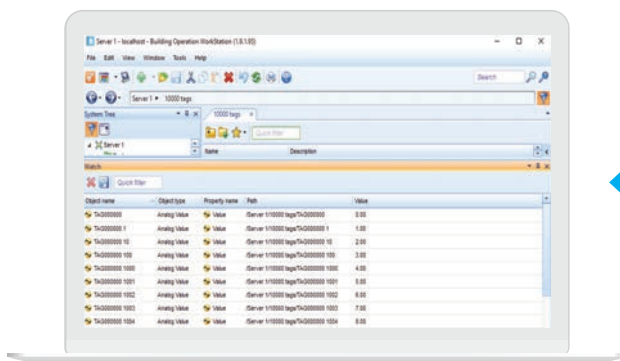
Software requirements

The server requires, at a minimum, the following software:

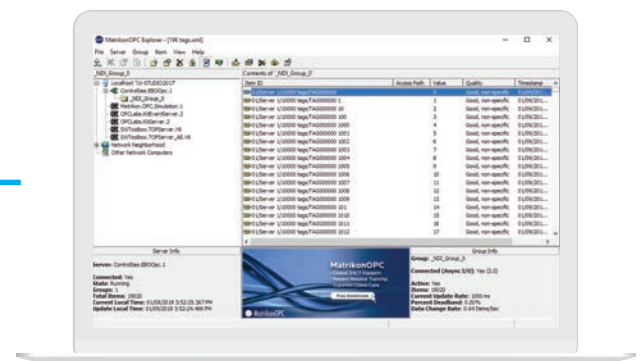
- Microsoft Windows® 10, Windows® 11, Microsoft Windows® Server 2012, Microsoft Windows® Server 2016, Microsoft Windows® Server 2019, Microsoft Windows® Server 2022.
- Schneider Electric Building Operation Workstation (EBO) Version 1.9.1.95 or higher
- Schneider Electric SmartConnector version 2.4.7 or higher.

Hardware requirements

- Intel® Pentium® 4 Processor
- 512 MB RAM
- Minimum 32 MB of available hard disk space
- Super VGA (800 × 600) or higher-resolution monitor with 256 colors
- Mouse pointing device



Schneider Electric's EcoStruxure Building Operation



OPC Server software