



# Your EcoStruxure Building Operation system is now connected!

Using Schneider Electric's EcoStruxure Building Operation (EBO)? Do you need to connect it with other systems?

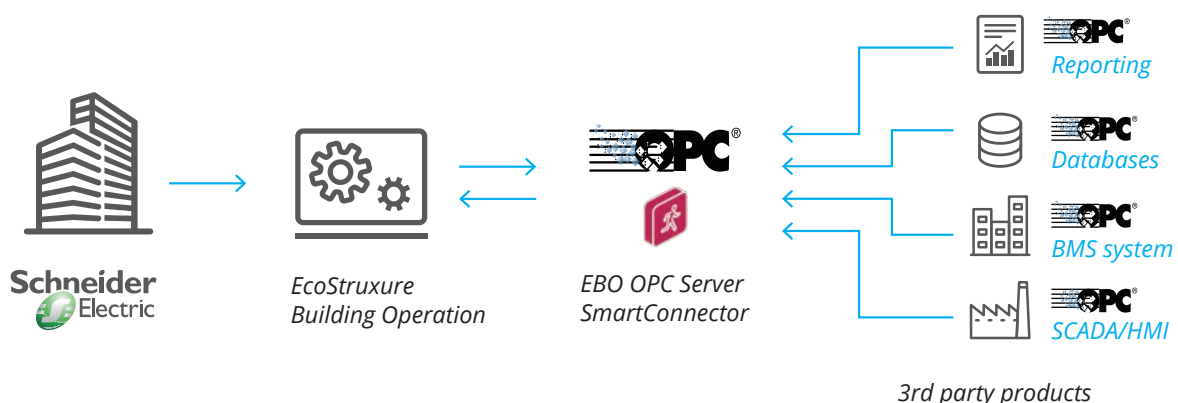
Now you can share EBO data with any system that supports OPC client functionality! For example: Reporting tools, other BMS systems, databases, SCADA/HMIs, Historians and more...

## Easy implementation

Most BMS and SCADA systems support OPC client functionality, so implementation is easy and straightforward. The EBO-OPC server exposes all the values defined in the EBO system and in all the controllers that are connected to it. You may browse your EBO values, select the values you want to share, and the data will be transferred to your other system.

## Performance is important!

Using Smart Connector technology, only value changes are pushed from your EBO system to the OPC server and then to the OPC client. No polling is required, ensuring optimal system performance!





## What is OPC?

In today's complex economy, information is the key to business success and profitability. OPC technologies were created to allow information to be easily and securely exchanged between diverse platforms from multiple vendors and to allow seamless integration of those platforms without costly, time-consuming software development. This frees engineering resources to do the more important work of running your business.

## OPC Specifications

- OPC DA (OPC Data Access) 1.0
- OPC DA (OPC Data Access) 2.0
- OPC DA (OPC Data Access) 3.0
- OPC UA (OPC Unified Architecture)

The **EBO-OPC Server** supports the following features and operations:

- EBO Value discovery
- EBO Value browsing
- Subscription mode (only values changes are sent to the OPC client)
- OPC Single read and Single write
- Runs as a Windows Server

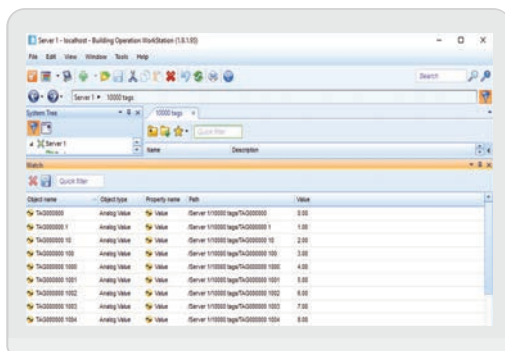
## Specifications

### Software requirements

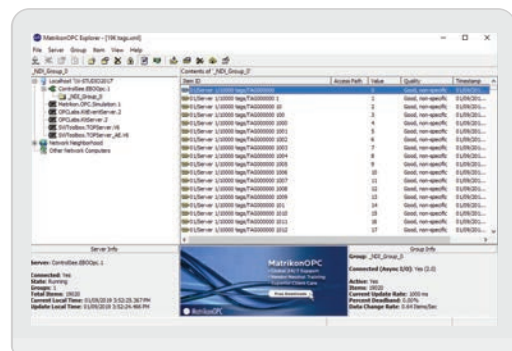
- Microsoft Windows® 7, Microsoft Windows® 8, Microsoft Windows® 8.1, Microsoft Windows® 10, Microsoft Windows® 2008 Server, Microsoft Windows® Server 2012, Microsoft Windows® Server 2016.
- Schneider Electric Building Operation Workstation (EBO) Version 1.9.1.95 or higher
- Schneider Electric SmartConnector version 2.4.7 or higher.

### Hardware requirements

- Intel® Pentium® 4 Processor
- 512 MB RAM
- Minimum 32 MB of available hard disk space
- Super VGA (800 × 600) or higher-resolution monitor with 256 colors
- Mouse pointing device



Schneider Electric's EcoStruxure Building Operation



OPC Client software